

# Stockton-Delta Amateur Radio Club



AN ARRL AFFILIATED CLUB

[WWW.W6SF.ORG](http://WWW.W6SF.ORG)

**JUNE 2014**

---

Welcome to the Stockton-Delta Amateur Radio Club. We are glad to have you as part of the organization.

## **WELCOME NEW MEMBERS**

Dave Navone, N6SWX

## **PRESIDENT'S MESSAGE**



Hello all,

Another busy ham radio month is coming up.

To recap our May, we as a club helped with communications at the Delta Century Bike Ride, March of Dimes March for Babies and Avenue of the Vines Half-Marathon Run. All these events raise thousands of dollars for local charities. Our participation helped the events go smoothly and safely. At the March for Babies event, John **NZ6Q** and I rode bicycle mobile through the course. It truly worked out very well; several situations were handled very quickly and efficiently with our bicycles. Thanks to Glen **K6KJQ** for the repeater that worked great with handheld radios.

Museum Ships Weekend is coming up very fast: June 6th-8th. We plan on being “radio active” around dinnertime Friday evening. The club tri-band yagi has been installed and tuned; plus separate 40 meter and 80 meter dipoles have been installed and tuned. The radio room on the USS Lucid has been refurbished and painted in anticipation of our arrival. If all goes well, the ship will be open all 24 hours during the event. My sleeping bag will be with me. A radio tuned to the club repeater will be on. Keep trying if no one answers right away. The call sign is N6MSO. No schedule of operators has been made, so maybe email me and tell me when you would like to operate. Come out and experience being on the receiving end of a pile up - the adrenaline rush is exhilarating.

Bring out some new hams let them have some fun as well.

Thursday June 12th is our club meeting. Plans for Field Day will be discussed. I ask that everyone come with ideas and a willingness to grab a task and make it your own. Charlie **WB6NVB** will be in charge of the antennas. Chat with him about what you can do to help and learn from the best. Other tasks need to be finalized: Radios, computers, operator times, food and coffee and all the extras needed. I just purchased the latest N3FJP logging software, do we want to use it?

When you come to the June 12 meeting, please know your schedule for the Field Day Weekend of June 28. When can you be at the Field day site June 28 or 29? We need to have an idea when the site will be manned. For Dinner the 28<sup>th</sup>, I propose Costco pizza? Any other ideas?

I'd like to propose holding the July meeting at UJ's restaurant, with a presentation by Joe **N6JPG** (Joe, you have been notified? Are you still ok with that?) on finding radio interference noise. My calendar for July and beyond this year does not yet have much on it. There have been talks of foxhunts, and other activities. If you have some ideas on what to do, raise your hand and volunteer.

And of course, the year is half over. Have you paid your dues? The repeater, insurance and incidentals – all those charges add up.

73,

Paul **N6KZW**



# SITUATION ROOM



"I HAVE EVERYTHING UNDER CONTROL."

## JUNE MEETING NOTICE

June 12<sup>TH</sup>, 2014

7:30PM

## **BEAR CREEK COMMUNITY CHURCH**

**QST QST QST** All members and their guests are invited to attend the June meeting on Thursday, June 12, 2014. The meeting will be held at **Bear Creek Community Church, 11171 Lower Sacramento Rd, north of Eight Mile Rd, beginning at 7:30PM – Field Day plans will be discussed.**

Plan on attending and invite a non-member ham to join you and become a member. Several members typically meet at a local restaurant starting at about 6:00 PM. Inquire on the air starting at about 4:00 PM for location.

Bring your non-member ham friend, or non-ham friend and show them a little of the fellowship that IS Amateur Radio. You'll be glad you did.

Field Day and Museum Ships weekend are both just a few weeks away. We need "all hands on deck" to plan for successful events for both weekends. Our meeting falls after Museum Ships Weekend, so we will be working hard on making a great Field Day event.

If you are need of transportation to and from the meeting, please contact Paul, **N6KZW** or John, **NZ6Q** and we will arrange transportation assistance for you.



## MUSEUM SHIPS WEEKEND CALL FOR OPERATORS JUNE 7th -8th 2014

**The Stockton-Delta Amateur Radio Club**, has the opportunity to put a genuine Museum Ship on the air right in our own backyard. The USS Lucid, a Korean War Mine Sweeper and one of the last “great wood boats” of the Navy is “stationed” near Louis Park on Monte Diablo Ave.

There will be plenty of activity and this a great opportunity for new operators to get on the air and try out a little of what is like to be the “rare DX” station – you are invited to be on the receiving end of those pile-ups.

If you want to operate, please email Paul **N6KZW** or Dave **N6LHL** with the dates and times you would like to be on the air. *(Editor’s note: The editor, having come back from working WIAW/7, recommends you plan on no more than 2 hours on the air without a break.)*

There are certificates available for operators to work 15 ships or more. Hams from around the world will be looking for us as **N6MSO**.





## MONDAY NIGHT NET CONTROL OPERATOR'S SCHEDULE FOR MAY – JUNE 2014

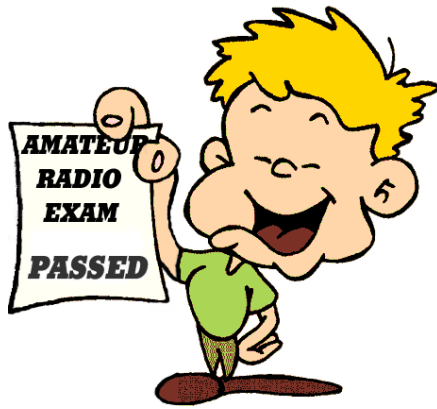
Many thanks for those who are volunteering to be our Monday night net controllers for May and June.

The club holds a weekly net every Monday night beginning at 8:00PM on the **W6SF** Repeaters on 147.165Mhz VHF and 444.250Mhz UHF. Club Repeater information is listed at the end of the newsletter.

This is a great opportunity to improve your operating skill in a “minimal” pressure environment. Contact Dave, **N6LHL** and sign up now for July & August. The Net Control Script is available on the club website at <http://www.w6sf.org/netcontrolscript.html> . If you have a conflict, please contact Dave, **N6LHL** as soon as possible in order to secure a replacement.

April 28	Paul, <b>N6KZW</b>	June 2	Guy <b>W6MSU</b>
May 5	Charlie <b>WB6NVB</b>	June 9	Bob <b>KJ6SVX</b>
May 12	Eric <b>W6INP</b>	June 16	Paul <b>N6KZW</b>
May 19	Dave <b>N6LHL</b>	June 23	Charlie <b>WB6NVB</b>
May 26	John <b>NZ6Q</b>	June 30	Eric <b>W6INP</b>





## NEWBIES ON 2-METERS

Possibly the silliest situation we have in amateur radio is that nearly all newcomers buy 2m handhelds, only to find that they can hit nothing but silent repeaters. There aren't that many guys on 2m anymore, and the old folks that are on 2m won't talk to them, anyway.

We should all try to do something about this. If you have a 2m radio in the shack, turn it on while you're there. If you hear a guy give his call sign, return the call, especially if you don't recognize the call sign. You could be missing an interesting conversation, and you're certainly missing a chance to expand the amateur radio community in our area.

I have often heard "KG6???" listening." I would be moving around with something and not think about calling them back. But then I decided that whatever I was doing, was certainly not important enough to not talk to this new guy.

As it usually turns out, this person just passed the test and the call sign just appeared in the FCC database. How cool is that? Often it's an "Elmer" moment. You could teach about the courtesy tone and about round-robin QSOs. You can give the new ham a positive and rewarding experience, as well as make a new friend.

What I want you to take away from this is: **Turn on the radio** when you're in your shack or out in the garage! Monitor the repeater! Not only that, return the call when you hear someone come on! If you don't, stop making complaints about how there's no 2m activity anymore or how ham radio is getting to be just a bunch of old guys.

This post idea was adapted from an entry on the [KB6NU's Ham Radio Blog](#).

Paul N6KZW

*(Editor's note: A couple of years ago, Steve **K6SCA** reported that the **W6SF** repeater was in the top 5 of busy repeaters in Northern California. Only the Mount Diablo repeaters and the SARA Club repeater were busier. We sponsor bi-monthly ham crams – we **PROMOTE** using **W6SF** at these exams. Let's make sure that new ham, getting his or her ticket is welcome on the air of our club repeater. Last month, we welcomed a new young ham, Nick, **KK6LRI** to a club meeting. Let's make sure he and anyone else on the repeater are just as welcome... **NZ6Q**)*



## W1AW/7 OPERATION RENO, NEV

John **NZ6Q**, Robert **N6GTO**, Craig **KJ6PKU** and Bill **AE6J** were invited to the host station of W1AW/7 at the W7RN Contest Superstation just outside of Reno, Nevada.

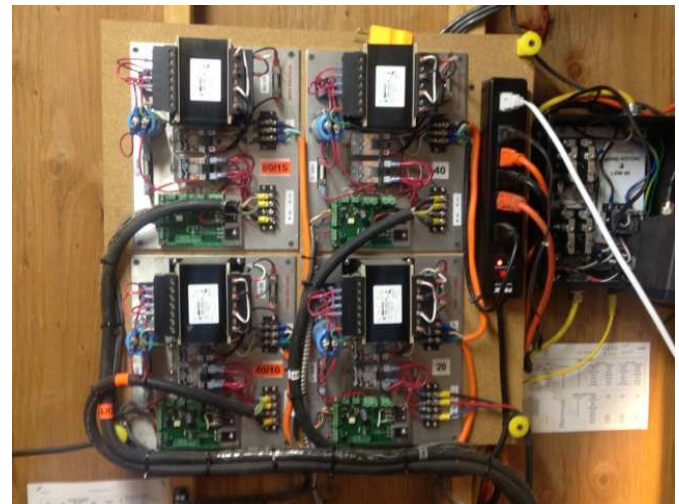
*(From Bill **AE6J**)* - We left Stockton early Friday morning for our shift, which was scheduled from 9AM till midnight on Friday, May 2<sup>nd</sup>. Upon arrival at the Comstock Memorial Station, the only word that can describe our initial observations is WOW!

The antennas were quite a sight. Several tall towers with stacked antennas reached for the sky, as well as various dipoles and wire antennas running from tower to tower to tower. To rotate some of the beams on some of the towers, it is the towers that rotate, not the antennas. While I had heard about rotating towers, it was still an awesome sight to see them and to see them rotate.





Walking in to the shack was another WOW moment. The pictures we had seen didn't prepare us for the sensation one gets when walking in to a shack like this. Seeing the rigs, five Elecraft K3's, a Yaesu 857, and a couple of other "spare" Yaesu's turned off, all the amplifiers, monitors and other peripheral gear was a sight to behold. Each operating position had two separate radios, full computer control of logging, antennas, power amplifiers, etc. All the antennas are touchscreen controlled, rotated by pressing a button on a computer screen with where you want the signal to go.



Amplifiers! One for each band! All wall mounted and pre-tuned for each band. Each integrated into the antenna system with Power Output, SWR and status all "touch screen controls"





After an hour of “break-in” time, we started operating and throughout the day, we were on and off the air, getting quite a bit of airtime. We actually needed breaks.

When John and I switched to 12 meter SSB, the pileup that hit us was more than I could have imagined. In about two hours, John and I worked over 500 contacts. That works out to about 250 an hour or around 4 a minute. You get a bit tongue-tied during a stretch like that. In the end, it was the band that stopped, not the pile-up, as 12-meters “closed down” a number of stations still calling simply faded away into the noise.



We did some on and off stretches on other bands, waiting for the late afternoon/early evening window on 40 meters. My earlier stretch on 12 meters with John in no way prepared me for what was to come when I took over the 40 meter flood. And flood it was. From when I sat down till I had to get up, it never let up as I worked around 1000 contacts. For over half that time, I was alone, on an island, all by myself at the SSB station while operators came and went rotating through a chance to enjoy a delicious supper prepared by Tom. During that window, John was busy racking up the contacts on CW in the station next to me. For the longest time, we were the only ones in the shack. A shining example of what the central valley can do.

We pulled off the hill at about 7:30AM Saturday morning. We all had a blast and truly enjoyed our time at the Comstock Memorial Station. It would have been worth the trip just to see it, working it just made the whole trip amazing.

*(John NZ6Q adds)* At one point, you just become too tired to continue. That hit me on CW on 30M at about 1AM Saturday morning. I had no choice but to drag my body back to the truck for a little sleep. I Physically could not copy any more CW. At about 4AM, I returned to the shack to find the 40M CW station available. Refreshed from my 3 hour nap, I jumped in and started calling CQ. The beam was pointed east, hoping to work east coast stations, but they were few and far between. We decided to swing the beam toward Japan – which remember is simply a touch of a button. After 2 or 3 stations, the flood gate was open and JA’s started pouring in over about 2 – 5 KCs above my calling frequency. The pile-up became so thick I started working JA’s “by the numbers” from 1 to 0 and alternating after about 10 – 15 QSOs in each district. The Japanese hams seemed to appreciate this, they were quite orderly and in an hour and 45 mins, I had logged almost 200 QSOs sadly leaving many stations ‘stranded’ as we had to stop at 5:45 AM to reset the log books for the 7<sup>th</sup> District QSO party which started at 6:00AM.

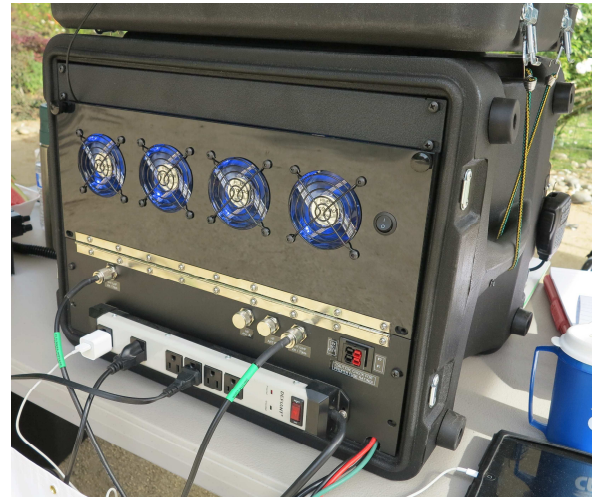
This was an amazing trip not only to see an award winning station like W7RN, but for the honor and privilege of being part of the ARRL Centennial QSO party in such a big way.



## DELTA CENTURY BIKE RIDE SUNDAY MAY 4<sup>TH</sup>, 2014

We pulled into the parking lot of Jessie's Grove Winery about 6:30AM Sunday morning. As hundreds of bike riders checked in at the registration booth, Paul **N6KZW**, Dave **N6LHL**, Mike **KJ6KDJ** and I, busily set up net control for the event. This year we would use APRS for tracking the Service And Gear (SAG) Vehicles around the course and this required a more complex net control station than in previous years. We would be receiving both voice and data from the field. We also had hams arriving to be assigned to SAG Vehicles and they required time to set-up and test APRS from each vehicle.

We were all impressed at Mike **KJ6KDL**'s "Comm Station" in a box, providing for VHF, UHF, HF, Packet, APRS all from one very impressive self-contained unit. It made operating Net Control easier and a lot more fun.



Bike Riders were hitting the course at an alarming pace and SAG Wagons were being tested on the air to make sure we were getting APRS signal and tracking before leaving the Start/Finish line. The advantages of having APRS were almost immediately known when in the first couple of hours, a report from the field of a bike with a mechanical failure allowed Net Control to "dispatch" the closest SAG vehicle who arrived within minutes of the report.

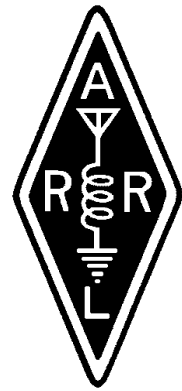
Throughout the day, a number of minor incidents, a lost rider and a welfare check for a rider possibly needing medical attention were all handled in this same very efficient manner. SAG vehicles were allowed to leap frog and cover different parts of the course as the afternoon wind caused a few riders to need to be brought into the start finish. APRS allowed us to visually observe each SAG vehicle in relation to the reports from rest stops on numbers of riders coming through. This kept SAG vehicles close to the bulk of the ride, but still allowed us to send them to sweep the course for potential lost riders or mechanical failures.



We couldn't get it done without great operators at each rest stop, Many thanks to Eric **W6INP** & Dave **N6DCH** who manned the Thornton rest stop. The Old Sugar Mill at Clarksburg was covered by Bob **K6DGO** & Guy **W6MSU**. Bob **K6DGO** used this as an opportunity to experiment with and test an antenna design he had been working on. He reported on the success of that idea at the May club meeting. Charlie **WB6NVB** and Chuck **W6COB** were on duty at the "busiest" stop in Courtland. This stop has the 100-mile riders pass through twice. Shirl **AA6K** & Randy **K6TVT** who covered Walnut Grove rest stop did an excellent job of monitoring the last riders and reporting into Net control as the ride came to its conclusion.



Repeater coverage was excellent with only a few minor 'holes' discovered. Rather than set-up a dedicated digi-peater for APRS, we elected to use the public i-gates on 144.390 and then received the locations already mapped on an internet capable Ipad and laptop at Net control. Coverage on 144.390 on the course was excellent and this allowed us as more simple set-up.



Our set and operation at Jessie's Grove even caught the attention of Dale Schornack **N5YSR**, News Anchor for Channel 10 in Sacramento. Dale and his wife had been visiting the Jessie's Grove Winery for the day and she had him check out our station.

Lessons learned. The Stockton Bicycle Club was so impressed with the APRS and "dispatch" of the SAG vehicles that they asked at the end, "how to make it better?" It was suggested that next year, they get a Google Voice or other 'virtual' number to be given to the riders allowing them to call directly into Net control. This would eliminate a rider calling someone from the club (usually Dave Hellyer) and having that person come to Net Control to relay a message. Bypassing this step would allow us to get the information directly and allow the Bike Club 'event manager' to be more of an Incident Commander and less of an 'order taker'.

APRS – we should look at investing a small cache of simple APRS units that we could have ready to deploy in a SAG wagon with an operator. Having something self-contained and dedicated for APRS would have simplified set-up and deployment of the SAG wagons. Operators assigned to SAG wagons wouldn't have to do much to the self-contained units other than make sure they are running.

It was a great day for a bike ride – even a 100-mile bike ride! And yes, that is a tortoise holding an HT.





## MARCH OF DIMES WALK FOR BABIES SATURDAY MAY 17<sup>TH</sup>, 2014

Saturday morning the 17<sup>th</sup> found us again in the field. This time it was the March of Dimes Walk for Babies on the Campus of the UC Stanislaus Stockton Campus. We have supported this event for three years now after being away from it for a time. The staff here really appreciates ham operators. The 5K walk takes place on a carefully laid out route inside the fenced in area of the Campus. Ham radio was used as the “eyes and ears” of the event managers, setting up Net Control, at the start / finish line and staffing each water stop with a ham.

This year, Chuck **W6COB** and Ed **N6XMA** had the honor of Net Control and they did an excellent job. We used Glen **K6KJQ**'s 444.325Mhz repeater on top of the police station downtown and portable coverage on the campus was excellent. The club has and has access to a number of VHF and UHF repeaters in and around Stockton – In my humble opinion (editor) we should consider rotating through these different repeaters and use them for events like this that are local rather. This allows club members to become more familiar with local channels rather than always relying upon the club's main repeater.

This event went off without a hitch. It was a perfect Spring morning, just right for a walk. Paul **N6KZW** and John **NZ6Q** brought out our bikes and ran “Bike-1” and “Bike-2” through the course keeping an eye on water stops and people walking for the event. Eric **W6INP**, Randy **K6TVT**, David **N5FDL** and Aaron **K6AIB** filled in the water stop assignments. We placed Aaron at the top end of course where there was some confusion about the route last year. His Tesla all-electric high-performance automobile was quite an attraction with the folks on the walk





## AVENUE OF THE VINES HALF-MARATHON SUNDAY MAY 18<sup>TH</sup>

This was our second year supporting the Lodi Avenue of the Vines Half-Marathon. The club provided needed communication between start-finish and the water stops along the route. Fleet Feet Sports, one of the organizers of the half-marathon run from the Woodbridge Winery, through the beautiful vineyards east of Lodi and back, sent the club this nice note of appreciation.

Now that we've had time to decompress, I just wanted to say **THANK YOU** for all your support of the 2014 Kaiser Permanente Avenue of the Vines Half Marathon & 5K. All our participants had a wonderful time and we look forward to an even bigger and better year in 2015! All wouldn't be possible if not for our sponsors, vendors, volunteers and participants. Thanks again for all that you did in making the event a success and for supporting the Emergency Food Bank & Family Services.



Many thanks to Shirl **AA6K**, Ed **N6XMA**, Randy **K6TVT**, Dave **N6LHL**, Dave **N6DCH**, Guy **W6MSU**, Eric **W6INP** and Chuck **W6COB** who all gave up a Sunday morning to come out and support the event.

Other than a few logistical problems, the event went extremely well.

## ARRL Centennial: W1AW Centennial Operations for May

May 28th – June 4th  
June 4th – June 11th  
June 11th – June 18th  
June 18th – June 25th  
June 25th – July 2nd

Missouri (W1AW/0)  
Alabama (W1AW/4)  
Arkansas (W1AW/5)  
Alaska (W1AW/KL7)  
Illinois (W1AW/9)

Wyoming (W1AW/7)  
Louisiana (W1AW/5)  
Minnesota (W1AW/0)  
Montana (W1AW/7)  
Maryland (W1AW/3)



Don't miss your opportunity to get on the air and work one of the many W1AW operations this month. If you don't have HF capability but want to work W1AW, reach out to one of the many club members who do have an HF rig – or – come to Museum Ships Weekend or Field Day and get on the air with a mentor.





## HAM CRAM SATURDAY JUNE 14<sup>TH</sup> , 0800 HOURS DAMERON HOSPITAL ANNEX

**What is a HamCram?** A way to quickly and easily become a licensed ham radio operator. No tedious preliminary home study. No long, boring once-a-week classes. Attend for just one day, 8:00 AM to 4:00PM, and you're done. Thousands of men and women, ages 16 to 90, have quickly succeeded in the past ten years, in over 100 sessions. The success rate has never been less than 90 percent for adults. Kids as young as 8 pass.

Our next sponsored HamCram is **Saturday June 14th at Dameron Hospital**. Testing and study sessions are located in the Annex Building at Lincoln and Acacia Streets. Pre-registration is encouraged.

Test sessions are available for those wanting to HamCram and upgrade to General or come in and take the General or Extra tests. Testing starts about 2:30 PM.

HamCrams are also available in Tracy. Check out <http://www.hamcrams.org> for more information.

HamCrams are also offered in Modesto. Check out <http://www.stanares.org> for details on HamCrams in Modesto

## FIELD DAY JUNE 28<sup>TH</sup> – 29<sup>TH</sup>

Start planning now to come to Field Day! We need everyone we can get on deck for this year's event. This year we have new antennas and new options at the field on DeVries Rd, Let's make a good show of of Field Day this year.

Come to the Field Day planning meeting at the June club meeting. We need to organize operating schedules, hardware, food and other supplies. Everyone needs to be involved to make this Field Day a success.







## A HAM'S CALENDAR

**June 12, 2014 – June Club Meeting, Bear Creek Community Church, 19:30 PDT** – Monthly membership of the Stockton Delta ARC at Bear Creek Community Church, 11171 Lower Sacramento Rd, just north of Eight Mile Rd. We will be discussing FIELD DAY!

**June 14, 2014 – SDARC sponsored HamCram at Dameron Hospital, 0800 – 1600 PDT** – See the announcement in this issue of the Flysheet and tell your interested non-ham friend.

**June 21, 2014 – ARRL Kids Day** – <http://www.arrl.org/kids-day> 1800 - 2359 UTC

**June 28 – 29, 2014 – ARRL Field Day 2014** – Come to Charlie's vineyard on DeVries Rd, north of Thornton Rd and get in on the fun of 2014 Field Day.

**July 10, 2014 – July Club Meeting, Bear Creek Community Church, 19:30 PDT** – Program TBA

**July 12 - 13, 2014 – IARU HF World Championship**

**July 17 - 19, 2014 – National Centennial Convention** – Hartford, Connecticut

+++++

Do you have any suggestions, comments or concerns? We want to hear from you.

Do you have an idea that we, as a club can all benefit from? Let us hear about it.

Do you have any topic for discussion that YOU could and would contribute to the club?

We want to hear from YOU! To submit articles for the monthly newsletter, email the editor at [john@litz.com](mailto:john@litz.com)

.



## W6SF CLUB INFORMATION

**MEETINGS:** Regular meetings are held on the second Thursday of each month at **7:30pm, at the Bear Creek Community Church, 11171 Lower Sacramento Road, just north of Eight Mile Road.** Members, guests, and people having an interest in Amateur Radio are invited to attend. The next meeting is scheduled for **Thursday, June 12<sup>th</sup>, 2014**

**WEEKLY NET:** Held each Monday evening at 2000hrs on **147.165+ PL 107.2 Hz** Members and visitors are invited to check in. There is also an unofficial get together on Thursday evenings (except meeting night) at 7:30pm **on 28.457.** Amateurs with the proper license are encouraged to participate.

**CLUB REPEATERS:** Located in the Sierra at 2500 feet, the club repeater covers the southern Sacramento and Northern San Joaquin Valleys. The call sign is W6SF, and can be heard on **147.165+Mhz** with a PL tone of 107.2 Hz. From the same site, the club also operates a 440MHZ repeater at **442.250 +** with a PL of 107.2 Hz.

The club also operates a low-level UHF repeater located in downtown Stockton **444.575MHz +** with a PL 107.2Hz. Coverage includes the Stockton area as well as parts of Lodi, Manteca, Tracy and Ripon.

**CLUB SIMPLEX FX: 147.51 MHz.**

**CLUB WEBSITE:** <http://www.w6sf.org>

### 2014 CLUB OFFICERS & EXECUTIVES:

President:	<b>N6KZW</b> , Paul Engelman	<a href="mailto:n6kzw@comcast.net">n6kzw@comcast.net</a>
Vice President:	<b>WB6NVB</b> , Charlie Johnson	<a href="mailto:wb6nvb@arrl.net">wb6nvb@arrl.net</a>
Treasurer:	<b>N6LHL</b> , David Hardwick	<a href="mailto:n6lhl@softcom.net">n6lhl@softcom.net</a>
Secretary:	<b>W6INP</b> , Eric Chapa	<a href="mailto:perrla1@aol.com">perrla1@aol.com</a>
Member At Large:	<b>NZ6Q</b> , John Litz	<a href="mailto:john@litz.com">john@litz.com</a>
Call Sign Trustee:	<b>AA6K</b> , Shirl Rose	<a href="mailto:rosesl@prodigy.net">rosesl@prodigy.net</a>
Repeater Trustee:	<b>KD6FVA</b> , John Kester	<a href="mailto:jbkester@att.net">jbkester@att.net</a>
Membership Chairman	<b>open</b>	
Newsletter Editor	<b>NZ6Q</b> , John Litz	<a href="mailto:john@litz.com">john@litz.com</a>

### CLUB DUES:

\$20 SINGLE and \$30 FAMILY

payable to Stockton-Delta Amateur Radio Club, P.O. BOX 690271, STOCKTON, CA 95269-0271

**We thank you for your continued support!**